

MIXO

CUSTOMIZABLE MODULAR INSERT SERIES



USER-FRIENDLY DESIGN

Unique module design for easy & fast installation process

BROAD COMPATIBILITY

Intermateability with other industry standard enclosures

ROBUST CRIMP CONNECTION

Long lasting crimp connection technology resistant to vibration & shock



POWER/SIGNAL



POWER



DATA TRANSMISSION



FIBER OPTIC



PNEUMATIC

TECHNICAL CHARACTERISTICS

BUILD YOUR OWN CONNECTOR

FIBER OPTIC

SC Type

PNEUMATIC INSERTS

Plastic Contacts
NEW Metal Contacts



- Withstand pressure up to 10 bar
- Available in straight & Right Angle
- Guaranteed up to 10,000 matings when installed with HNM enclosures and MIXO frames

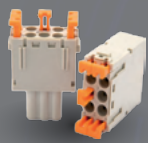
ELECTRIC CONTACTS

Silver/Gold Plated Brass

TERMINATION TYPE

Crimping, Clamp, Axial Screw

Squich Insert



- Reduce wiring time
- No tools & special wire preparation needed
- Vibration resistant

CONTACT POSITION

Codes/Numbers on Both Sides for Easy identification

INSERT DESIGN

- Self-Extinguishing Thermoplastic
- Patented "Swallowtails" Design to Prevent Incorrect Installation

Universal RJ45 Insert **NEW**



- For many different RJ45 patch cords
- Maximum Dimension 34mm (L) x 13.5mm (W) x 9.5mm (H)

MODULE LOCK TABS

Guarantee Perfect Stability

MODULE CARRIER FRAME

Asymmetric Protective Earth Contacts (Two Per Frame) To Prevent Incorrect Coupling

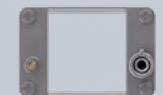
5 Different Frame Sizes

Up to 12 modules in a single enclosure

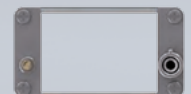
1 Module



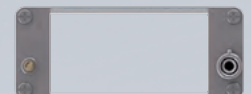
2 Modules



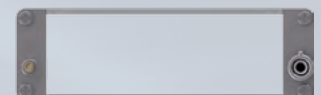
3 Modules



4 Modules



6 Modules



DUMMY MODULE



For Unused Frame Slots

MIXO ONE ENCLOSURES **NEW**



- Designed for a single-sized modules
- Aluminium die cast alloy, nickel plated
- Shaped Stainless steel lever for maximum protection
- Molded pegs for better corrosion resistance
- PE connection terminal directly incorporated
- 4 optional coding pins are available